

ThingsWifi IOT

WIFI ENABLED IOT DEVICE WITH THINGS CLOUD APP

FORECAST 7 DAYS OF ENERGY GENERATION

SD CARD PROVISION

SUPPORT IOS, ANDROID & WEB

MULTI DEVICES & USER ACCESS

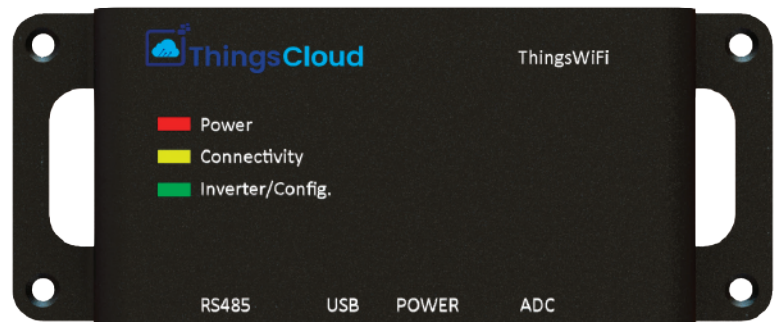
E - MAIL, SMS & APP NOTIFICATIONS

REAL TIME TRACKING

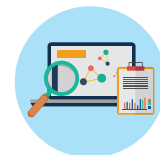
EXTERNAL SENSOR COMPATIBILITY

APPLICATIONS

- Solar Systems
- Wind Farms
- Solar Pumps
- Energy management
- Milk Chillers
- Manufacturing Equipment



AI For Predictive And Preventive Maintenance. Learn And Adapt To Customer Usage.



Solar Data - Analytics : - Real Time Tracking Of Your Device. Built in Modbus RTU To Connect to Any Hardware Devices.



ThingsCloud SAAS - Services & Security.



Wifi b/ g/ n/ Access with RS - 485 Interface



THINGS WIFI SPECIFICATIONS

ELECTRICAL DATA

Power Requirements	5 V, 0.8 A
Max Power Consumption	4W
Power Supply	External adapter

USER INTERFACE

Wifi (2.4ghz, 802.11 B/g/n, WEP,WPA,WPA2,PSK)	YES
RS485	YES
Analog Input	YES (Optional)
LED	4 nos

COMMUNICATION RANGE

RS485	1000m
-------	-------

MECHANICAL DATA

Dimensions (W X H X D)	155 x 30 x 50 mm
Weight	250g
Installation	Wall, indoor

ENVIRONMENTAL CONDITIONS

Operation	Upto 55 Deg cel
Relative Humidity (Non-condensing)	95%
Protection Class	IP20

GENERAL DATA

Cloud Support	Yes
Language Support	EN

FEATURES

Number Of Connected Inverters	Max. 28
Storage	SD Card

